



www.bunsen.es



ANALOGICAL HEATING PLATE

Ref. 1541

GENERAL CHARACTERISTICS

- * Plate constructed in stainless steel AISI 316.
- * Stainless steel surface, easy to keep clean and resistant to corrosion.
- * Heating elements distributed evenly throughout the whole plate thus providing good uniformity in temperature.
- * Metallic cabinet painted in epoxy.
- * Maximum temperature on the surface of the plate up to 400°C.
- * Excellent thermal isolation that prevents the transmission of heat to the cabinet where the control elements are located.
- * Electronic heater energy control from 0-100%.
- * The possibility of incorporating a stainless steel basin for sand baths.

Manufactured according to EC directives.

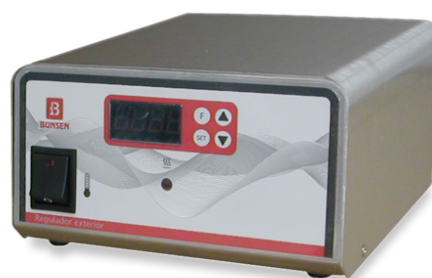
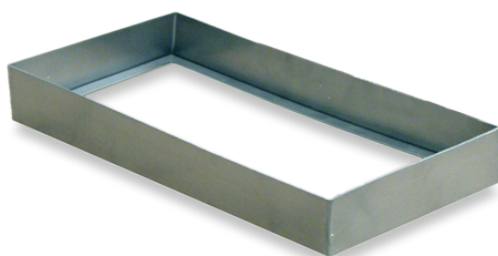


BUNSEN SA. C/ Río Alberche, 30, - 28970 - Humanes de Madrid, Madrid. SPAIN
Tlf. +34 916 113 584 - Fax. +34 916 128 254
info@bunsen.es - www.bunsen.es



Ref	Useful measures W x D	Ext. measures W x H x D	Max. temp	Power
1541	250 x 500mm.	190 x 280 x 580mm	400°C	3000W.

Ref	Accessories
1560-2	Stainless steel basin for sand baths: 190 x 280 x 580 mm.
1735	Digital programmer
1521	Power outlet to connect a contact thermometer or a digital programmer



BUNSEN SA. C/ Río Alberche, 30, - 28970 - Humanes de Madrid, Madrid. SPAIN
Tlf. +34 916 113 584 - Fax. +34 916 128 254
info@bunsen.es - www.bunsen.es

