



[www.bunsen.es](http://www.bunsen.es)



# ANALOGICAL HEATING PLATE

Ref. 1540

## GENERAL CHARACTERISTICS

- \* Plate constructed in stainless steel AISI 316.
- \* Stainless steel surface, easy to keep clean and resistant to corrosion.
- \* Heating elements distributed evenly throughout the whole plate thus providing good uniformity in temperature.
- \* Metallic cabinet painted in epoxy.
- \* Maximum temperature on the surface of the plate up to 400°C.
- \* Excellent thermal isolation that prevents the transmission of heat to the cabinet where the control elements are located.
- \* Electronic heater energy control from 0-100%.
- \* The possibility of incorporating a stainless steel basin for sand baths.

Manufactured according to EC directives.

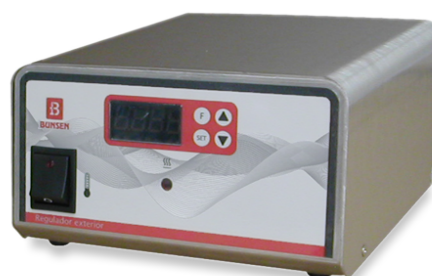
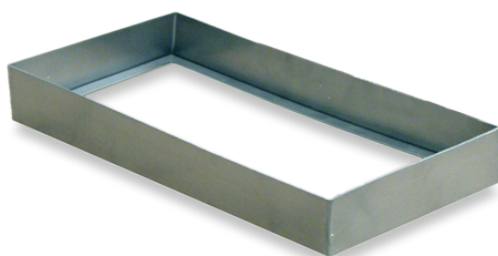


BUNSEN SA. C/ Río Alberche, 30, - 28970 - Humanes de Madrid, Madrid. SPAIN  
Tlf. +34 916 113 584 - Fax. +34 916 128 254  
[info@bunsen.es](mailto:info@bunsen.es) - [www.bunsen.es](http://www.bunsen.es)



Ref	Useful measures W x D	Ext. measures W x H x D	Max. temp	Power
1540	200 x 400mm.	190 x 220 x 480mm	400°C	2000W.

Ref	Accessories
1560-1	Stainless steel basin for sand baths: 190 x 220 x 480 mm.
1735	Digital programmer
1521	Power outlet to connect a contact thermometer or a digital programmer



BUNSEN SA. C/ Río Alberche, 30, - 28970 - Humanes de Madrid, Madrid. SPAIN  
Tlf. +34 916 113 584 - Fax. +34 916 128 254  
[info@bunsen.es](mailto:info@bunsen.es) - [www.bunsen.es](http://www.bunsen.es)

