



[www.bunsen.es](http://www.bunsen.es)



## DIGITAL HEATING PLATES PCR SERIES.

Ref. 1533

### GENERAL CHARACTERISTICS

- \* Plate constructed in stainless steel AISI 316.
- \* Stainless steel surface, easy to keep clean and resistant to corrosion.
- \* Heating elements distributed evenly throughout the whole plate thus providing good uniformity in temperature.
- \* Metallic cabinet painted in epoxy.
- \* Excellent thermal isolation that prevents the transmission of heat to the cabinet where the control elements are located.
- \* Maximum temperature on the surface of the plate up to 200°C.
- \* Temperature control with Digital regulation with a "J-type thermocouple" temperature probe with a precision of 0.5% full scale, PID regulation, Auto-tuning (self-adjustable) and a display. Resolution 1°C.
- \* The possibility of incorporating a stainless steel basin for sand baths.

**Manufactured according to EC directives.**

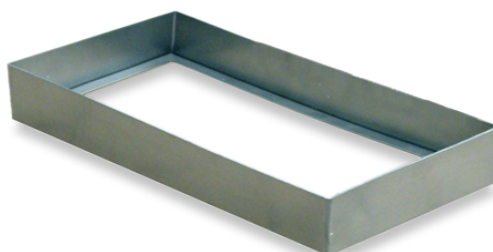


BUNSEN SA. C/ Río Alberche, 30, - 28970 - Humanes de Madrid, Madrid. SPAIN  
Tlf. +34 916 113 584 - Fax. +34 916 128 254  
[info@bunsen.es](mailto:info@bunsen.es) - [www.bunsen.es](http://www.bunsen.es)



| Ref  | Useful measures W x D | Ext. measures W x H x D | Max. temp | Power  |
|------|-----------------------|-------------------------|-----------|--------|
| 1533 | 250 x 500mm.          | 190 x 220 x 580mm       | 200°C     | 1200W. |

| Ref    | Accessories  |
|--------|--|
| 1560-2 | Stainless steel basin for sand baths: 190 x 280 x 580 mm.  |
|        | Aluminium surface or inox surface (consult)                |
|        | External probe to control the sample temperature (consult) |



BUNSEN SA. C/ Río Alberche, 30, - 28970 - Humanes de Madrid, Madrid. SPAIN  
Tlf. +34 916 113 584 - Fax. +34 916 128 254  
[info@bunsen.es](mailto:info@bunsen.es) - [www.bunsen.es](http://www.bunsen.es)

