



BUNSEN

Thermostatic Baths BD SERIES



Ref. 1615



Ref. 1611



Ref. 1613

Baths

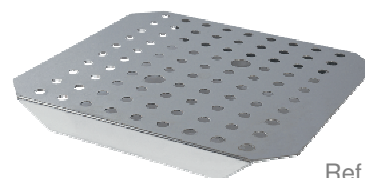
GENERAL CHARACTERISTICS

- Double wall, metal construction: exterior painted in epoxy with anti-oxidant treatment and interior basin made of 18/10 stainless steel.
- Heating by shielded heating element made of AISI 316 stainless steel.
- Equipped with a safety thermostat adjustable that has a manual reset in the event of over-temperature according to DIN 12877, class 2.
- Control panel includes:
 - Illuminated ON switch
 - Indicator light showing heating element operation.
 - Safety thermostat indicator light.
 - Display.
- Digital Temperature control by digital thermostat
- Temperature precision: 0,1° C

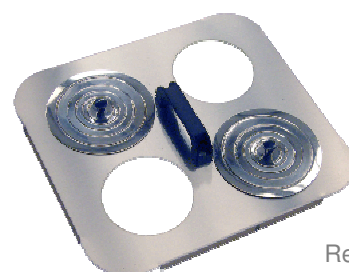
Manufactured according to CE directives.

Ref.	Capacity	Type	Max. temp	Useful measures W x H x D	Weight (Kg)	Ext. measures W x H x D	Power (W)	Probe	Precision
1611	5 L.	Digital	100 °C	290 x 150 x 140	4	370 x 200 x 280	700	PTC	±0.5%fs
1612	5 L.	Digital	200 °C	290 x 150 x 140	4	370 x 200 x 280	1000	Pt100	±0.5%fs
1613	12 L.	Digital	100 °C	320 x 150 x 290	6	390 x 200 x 440	1200	PTC	±0.5%fs
1614	12 L.	Digital	200 °C	320 x 150 x 290	6	390 x 200 x 440	1500	Pt100	±0.5%fs
1615	20 L.	Digital	100 °C	490 x 150 x 290	8	560 x 200 x 440	1700	PTC	±0.5%fs
1616	20 L.	Digital	200 °C	490 x 150 x 290	8	560 x 200 x 440	2000	Pt100	±0.5%fs

Ref.	Accesorios
1630	Stainless steel cover with 2 openings and reduction disks for 5 litre bath.
1631	Stainless steel cover with 4 openings and reduction disks for 12 litre bath.
1632	Stainless steel cover with 6 openings and reduction disks for 20 litre bath.
1640	Top cover for 5 litre bath.
1641	Top cover for 12 litre bath.
1642	Top cover for 20 litre bath.
1650	Element cover for 5 litre bath.
1651	Element cover for 12 litre bath.
1652	Element cover for 20 litre bath.
1660	Solid cover for 5 litre bath.
1661	Solid cover for 12 litre bath.
1662	Solid cover for 20 litre bath.
1663	Drain tap.
1600-10-1	Racks (265x120mm) for 98 test tubes 10-12 mm. In diameter.
1600-10-2	Racks (265x120mm) for 78 test tubes 14-16 mm. In diameter.
1600-10-3	Racks (265x120mm) for 50 test tubes 18-20 mm. In diameter.
1600-3	Liquid level indicator (factory installed).
	Special platforms available on customer request.



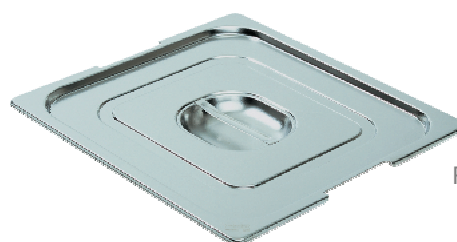
Ref. 1651



Ref. 1631



Ref. 1641



Ref. 1661

Baths